

# PRESS BRAKE TOOLS

Verktyg för kantpressar



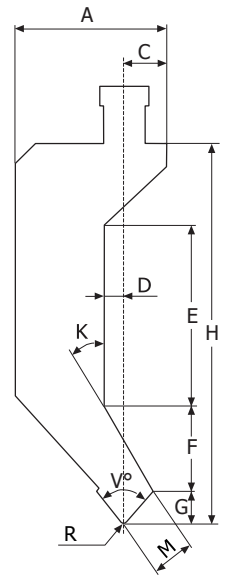
 **URSVIKEN**

# UPPER TOOLS

## ÖVERVERKTYG

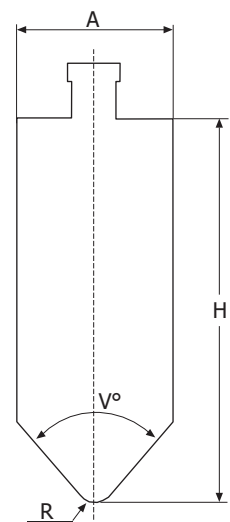
### OV 31

Part. no Art. nr	Dimension Mått											Load Belastning ton/m
	R	A	C	D	E	F	G	H	K	V	M	
	mm	mm	mm	mm	mm	mm	mm	mm	°	°	mm	
49252	1	50	15	7	59	28	10	125	30	80	14	Max 75
49253	3	50	15	7	56	30	11	125	30	80	17	Max 100
52323	6	50	15	7	56	31	10	125	30	80	17	Max 100
52324	1	50	15	15	38	41	10	125	30	80	14	Max 50
52325	1	45	15	7	70	21	5.5	125	30	80	8	Max 36
52326	1	65	15	30	16	52	7	125	35	80	10	Max 15
52329	1	50	15	6	38	26	10	100	30	80	14	Max 75
65166	1	20	10	0	46	18	16	125	15	28	17	Max 50
91636	1	50	15	6	135	27	11	200	30	80	17	Max 100
52330	3	50	15	6	133	29	11	200	30	80	17	Max 105
52328	1	115	25	48	36	97	9	200	30	80	13	Max 35



### OV 32/33

Part. no Art. nr	Dimension Mått				Load Belastning ton/m
	R	A	H	V	
	mm	mm	mm	°	
52339	1	16	200	28	Max 75
49256	1	16	125	28	Max 75
49728	3	16	125	28	Max 100
52338	6	16	125	28	Max 100
49254	6	50	125	80	Max 350
49255	12	50	125	80	Max 350
52331	20	50	125	80	Max 350
52332	25	80	125	80	Max 600
52333	-	50	125	-	Max 350
52334	-	16	125	-	Max 100
52335	-	50	50	-	Max 350
52336	-	50	100	-	Max 350

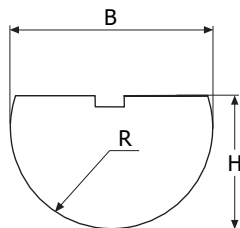
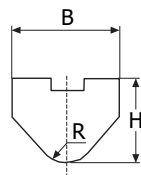


# RADIUS TOOLS

VERKTYGSSPETS

Max 350 ton/m

Part. no Art. nr	Dimension Mått		
	R	B	H
	mm	mm	mm
65091	3	45	40
52451	6	45	40
92493	8	45	40
92449	10	45	40
52452	12	45	40
69291	15	45	40
92322	18	45	40
52453	20	45	40
52454	25	50	40
52455	30	60	40
52456	35	70	40
52457	40	80	40
52458	45	90	60
52459	50	100	65
52460	60	120	90
52461	70	140	60
70882	74	145	60
92496	75	125	50
92486	80	125	50

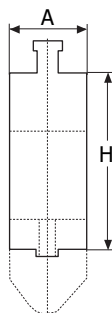


# PUNCH HOLDER

VERKTYGSHÅLLARE

Max 350 ton/m

Part. no Art. nr	Dimension Mått			Load Belastning
	A	D	H	
	mm	mm	mm	ton/m
52450	50	-	110	Max 350



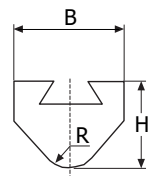
# RADIUS TOOLS

VERKTYGSSPETS

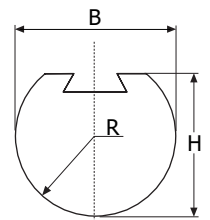
Max 200 ton/m

Part. no Art. nr	Type Typ	Dimension Mått		
		R	B	H
		mm	mm	mm
66511	A	4	45	45
66512	A	5	45	45
52341	A	6	45	45
55153	A	7.5	45	45
53950	A	8	45	45
55154	A	10	45	45
52342	A	12	45	45
55155	A	1/2"	45	45
55604	A	15	45	45
59266	A	16	45	45
66397	A	18	45	45
55156	A	19	45	45
52343	A	20	45	45
69136	A	22	45	45
68540	A	25	45	45
52344	B	25	-	35
92349	B	1"	-	35
91428	B	26	-	35
69773	B	28	-	45
52345	B	30	-	45
56220	B	32	-	45
52346	B	35	-	60
52347	B	40	-	70
52348	B	45	-	80
52349	B	50	-	93
52350	B	60	-	115
52351	B	70	-	135

Type A



Type B

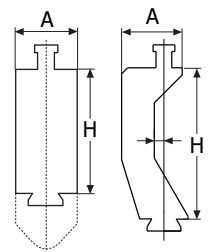


# PUNCH HOLDER

VERKTYGSHÅLLARE

Max 200 ton/m

Part. no Art. nr	Dimension Mått			Load Belastning
	A	D	H	
	mm	mm	mm	ton/m
52340	50	-	100	Max 200
55926	50	-	150	Max 200
66506	50	8	125	Max 100



# UPPER TOOLS UMV-R

## ÖVERVERKTYG UMV-R

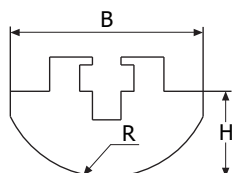
# HEMMING TOOLS

## OMSLAGSVERKTYG

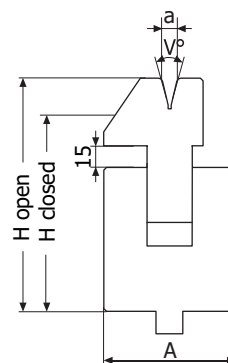
### Radius nose UMV-R

L=835 / L=415

Part. no Art. nr	Dimension Mått		
	R	B	H
	mm	mm	mm
79049	28	80	84
79050	37	74	70
76133	45	90	60
79051	46	92	100
79052	53	106	100
76133	75	135	60
76133	85	154	60
76133	102	184	80
76133	112	202	80
76133	120	216	80
76133	150	120	60
76133	160	290	100



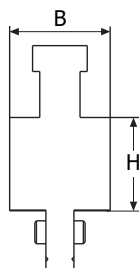
Part. no Art. nr	Dimension Mått				Load Belastning
	a	A	H	V	
	mm	mm	mm	°	ton/m
20.264-SP	6	60	105>90	35	Max 60
20.303-SP	8	60	110>95	30	Max 80
20.231-SP	10	60	135>120	26	Max 100
20.305-SP	12	60	140>125	26	Max 100



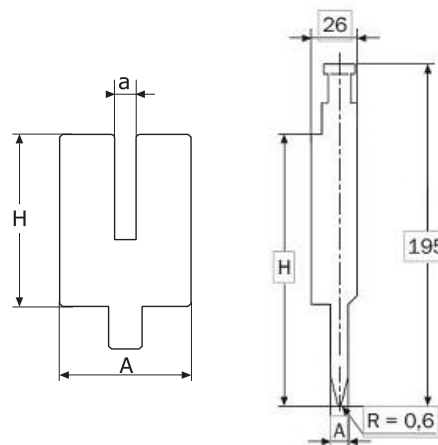
### Holder UMV 28-UMV-R

L=500

Part. no Art. nr	Dimension Mått			Load Belastning
	A	D	H	
	mm	mm	mm	ton/m
79007	70	-	110	Max 350
79053			400	Max 350



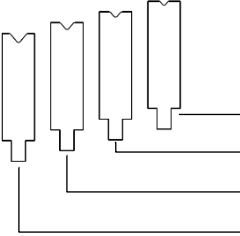
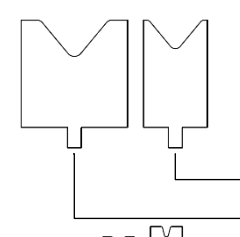
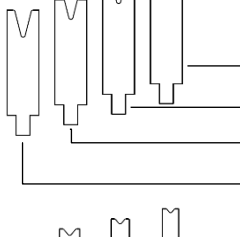
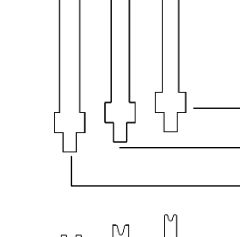
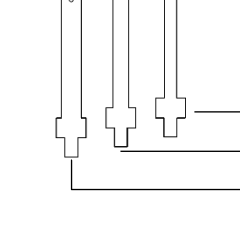

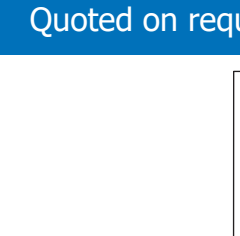

Part. no Art. nr	Dimension Mått				Load Belastning
	a	A	H	V	
	mm	mm	mm	°	ton/m
15.902-1-U	-	8	155	24	Max 80
25.992	8.2	57	100	-	Max 50
15.904-1-U	-	10	155	24	Max 80
25.994	10.2	57	100	-	Max 50
15.905-1-U	-	12	155	24	Max 80
25.995	12.2	57	100	-	Max 50

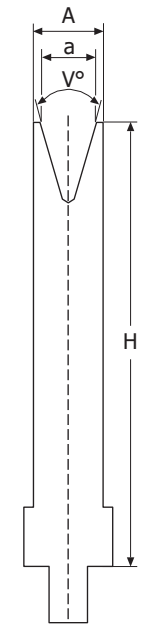
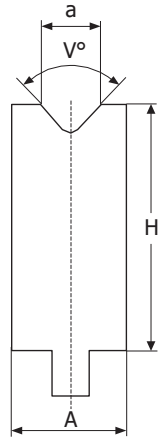


# DIES

## UNDERVERKTYG

### Single V dies

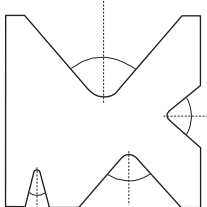
	Part. no Art. nr	Dimension Mått				Load Belastning
		a	A	H	V	
		mm	mm	mm	°	
	52365	8	30	100	80	Max 125
	52366	10	30	100	80	Max 125
	52367	12.5	30	100	80	Max 100
	52368	16	30	100	80	Max 80
	52369	20	30	100	80	Max 70
	52370	25	40	100	80	Max 80
	52371	32	40	100	80	Max 70
	52372	40	60	100	80	Max 125
	52373	50	60	100	80	Max 100
	52374	64	100	100	80	Max 190
	52375	80	100	100	80	Max 170
	52376	8	30	100	28	Max 70
	52377	10	30	100	28	Max 50
	52378	12.5	30	100	28	Max 30
	52379	16	30	100	28	Max 25
	52380	20	30	100	28	Max 20
	52381	25	40	100	28	Max 25
	52382	32	40	100	28	Max 20
	56540	8	16	150	80	Max 55
	56541	10	18	150	80	Max 55
	56542	12.5	20	150	80	Max 50
	56543	16	24	150	80	Max 50
	56544	20	25	150	80	Max 50
	56545	25	32	150	80	Max 60
	56546	6	12	150	28	Max 20
	56547	8	16	150	28	Max 20
	56548	10	20	150	28	Max 23
	56549	12.5	25	150	28	Max 25
	56550	16	30	150	28	Max 25



## MULTI V-DIES

### FLERSPÅRSDYNOR

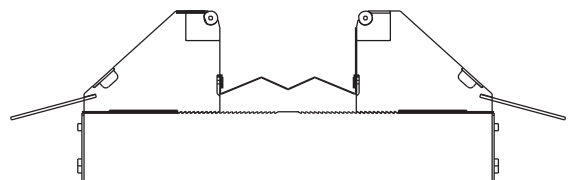
Quoted on request



## VARIABLE DIE TOOL

### VDT

Quoted on request

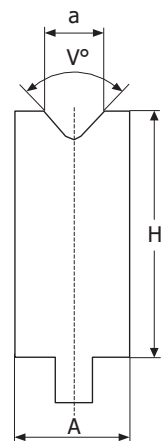


# DIES

## UNDERVERKTYG

### Single V dies

	Part. no Art. nr	Dimension Mått				Load Belastning
		a	A	H	V	
		mm	mm	mm	°	ton/m
	25.100	4	8	100	86	Max 100
	25.201	6	20	100	84	Max 100
	25.202	8	20	100	84	Max 100
	25.203	10	20	100	84	Max 100
	25.204	12	25	100	84	Max 100
	25.205	16	30	100	84	Max 100
	25.206	20	30	100	84	Max 100
	25.207	24	35	100	80	Max 100
	25.208	30	45	100	80	Max 100
	25.209	40	55	100	80	Max 100
	25.210	50	65	100	80	Max 100
	25.111	60	75	100	80	Max 100
	25.112	70	85	100	80	Max 100
	25.113	80	100	100	80	Max 100
	25.114	90	110	120	80	Max 100
	25.115	100	120	120	80	Max 100
	25.116	120	145	120	60	Max 100
	25.621	6	20	150	84	Max 100
	25.622	8	20	150	84	Max 100
	25.623	10	20	150	84	Max 100
	25.624	12	25	150	84	Max 100
	25.625	16	30	150	84	Max 100
	25.626	20	30	150	84	Max 100
	25.627	24	35	150	80	Max 100
	25.628	30	45	150	80	Max 100
	25.629	40	55	150	80	Max 100
	25.630	50	65	150	80	Max 100
	25.400	4	15/20	100	30	Max 20
	25.401	6	20	100	30	Max 40
	25.402	8	20	100	30	Max 40
	25.403	10	20	100	30	Max 40
	25.404	12	25	100	30	Max 40
	25.405	16	30	100	30	Max 50
	25.406	20	35	100	30	Max 60
	25.407	24	40	100	30	Max 65
	25.408	30	55	100	30	Max 90
	25.409	40	60	100	30	Max 90
	25.901	6	20	150	30	Max 30
	25.902	8	20	150	30	Max 40
	25.903	10	20	150	30	Max 40
	25.904	12	25	150	30	Max 40
	25.905	16	30	150	30	Max 50
	25.906	20	35	150	30	Max 60
	25.907	24	40	150	30	Max 65
	25.908	30	55	150	30	Max 90
	25.909	40	60	150	30	Max 90

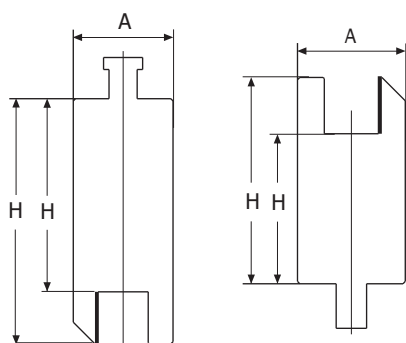


# JOGGLE (Z) TOOL HOLDER AND INSERTS

Z-VERKTYG HÅLLARE OCH INSATSER

L=835 / L=415

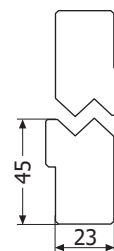
Part. no Art. nr	Dimension Mått		Load Belastning
	A	H	
	mm	mm	ton/m
79057	46	89/113	Max 100
79058	46	64/88	Max 100



Part. no Art. nr	Dimension Mått	
	Z	V
	mm	°
40.510	1.0	160
40.515	1.5	160
40.520	2.0	150
40.525	2.5	150



Part. no Art. nr	Dimension Mått	
	Z	V
	mm	°
40.590	9.0	90
40.610	10.0	90
40.611	11.0	90
40.612	12.0	90
40.613	13.0	90
40.614	14.0	90
40.615	15.0	90



Part. no Art. nr	Dimension Mått	
	Z	V
	mm	°
40.511	1.0	90
40.516	1.5	90
40.521	2.0	90
40.526	2.5	90
40.530	3.0	90
40.535	3.5	90
40.540	4.0	90
40.545	4.5	90
40.550	5.0	90
40.555	5.5	90
40.560	6.0	90
40.565	6.5	90
40.570	7.0	90
40.575	7.5	90
40.580	8.0	90

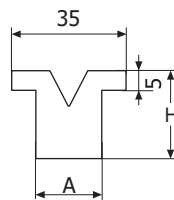
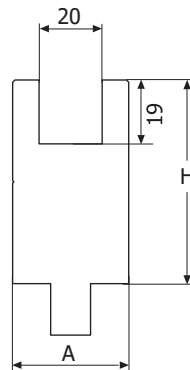


# INTERCHANGEABLE PLASTIC INSERTS

## HÅLLARE MED UTBYTBARA PLASTINSATSER

L=835 / L=415

Part. no Art. nr	Dimension Mått				Load Belastning
	a	A	H	V	
	mm	mm	mm	°	ton/m
22.005	-	35	95	-	Max 20
32.306	6	20	24	30	Max 20
32.308	8	20	24	30	Max 20
32.310	10	20	24	30	Max 20
32.406	6	20	24	45	Max 20
32.408	8	20	24	45	Max 20
32.410	10	20	24	45	Max 20
32.412	12	20	24	45	Max 20
32.606	6	20	24	60	Max 20
32.608	8	20	24	60	Max 20
32.610	10	20	24	60	Max 20
32.612	12	20	24	60	Max 20
32.616	16	20	24	60	Max 20
32.806	6	20	24	88	Max 20
32.808	8	20	24	88	Max 20
32.810	10	20	24	88	Max 20
32.812	12	20	24	88	Max 20
32.816	16	20	24	88	Max 20



### URSVIKEN TECHNOLOGY AB

Mekanvägen 71  
SE-932 37 Ursviken, Sweden

Phone: +46 910 516 00  
info@ursviken.com

### URSVIKEN INC

1636 Todd Farm Drive  
Elgin, IL 60123 USA

Phone: +1 (847) 214 87 00  
info@ursviken.com