


#### Main Features

- Possibility of retracting the back gauge at the end of the 1000-mm stroke
- High tamping strength, proportional to the cutting strength
- Blocks with material protections eliminate or minimise markings on the material
- Adjustment of the length of the cut to increase the cutting pace on shorter sheets

#### Benefits

- Different cutting capacities and lengths;
- Hydraulic Shears with Swing Cut;
- Numerical control with CybTouch8 (GH Plus) touch screen;
- Motorised gap control, controlled by standard CNC (GH Plus);
- Mechanical, Hydraulic and simple Electronics;
- Rigid, compact back gauge.

They can handle sheet metal measuring 2 to 6 metres, with thicknesses of between 4 and 13 mm. There are also a wide range of accessories and optional extras, increasing their flexibility of use.



**EFFICIENCY AND EFFECTIVENESS**

Reduced demand on the machine frame when cutting thicknesses less than the maximum machine capacity.

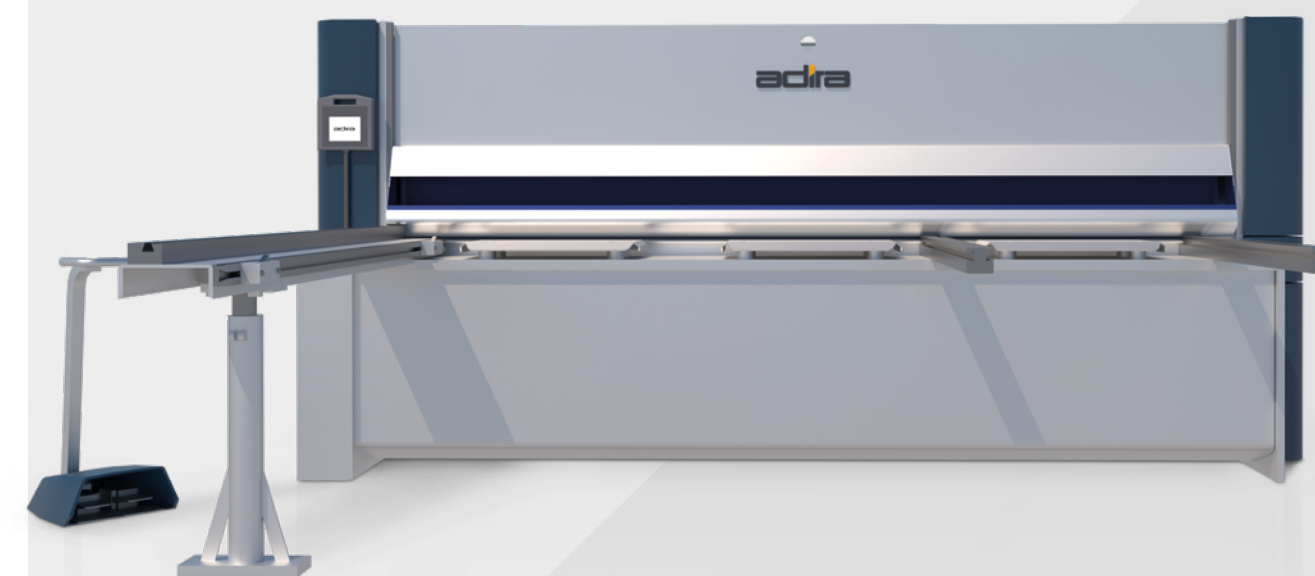
GH

# adira

METAL FORMING SOLUTIONS

# adira

Rua das Lages 67 . 4410-272 Vila Nova de Gaia  
T.: +351 226 192 700 . adira@adira.pt

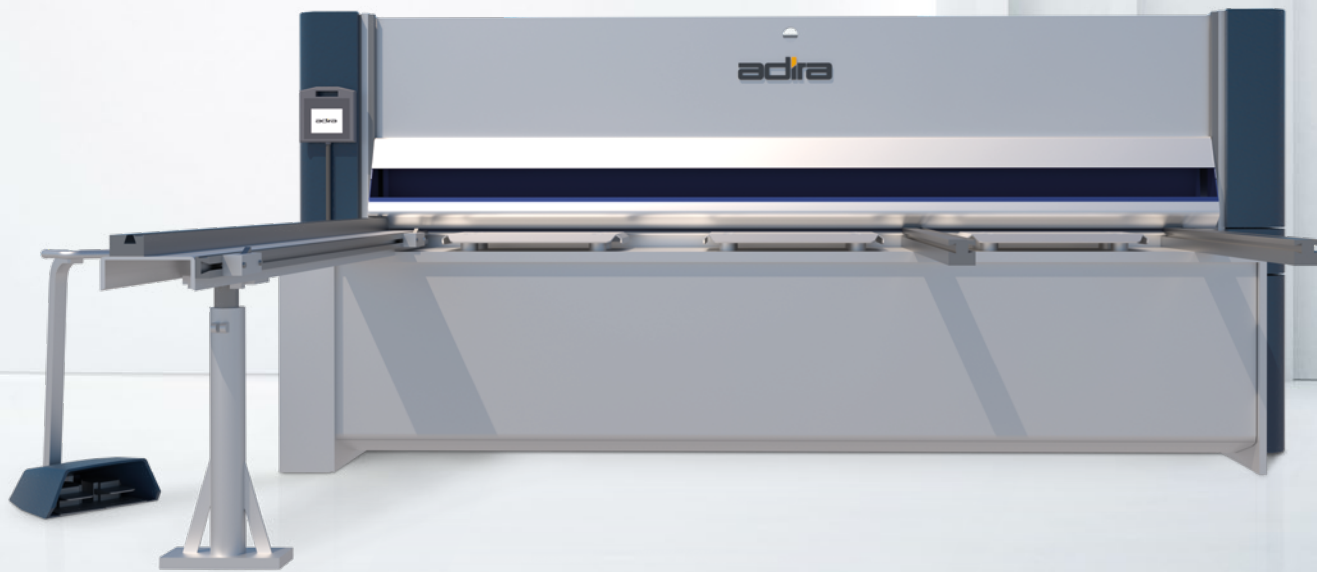


**SHEARS GH**  
TECHNICAL DATA SHEETS

## Shears

## GH

The ADIRA GH range of hydraulic shears are robust and reliable, characterised by their swing cut and low angle of fixed cut.

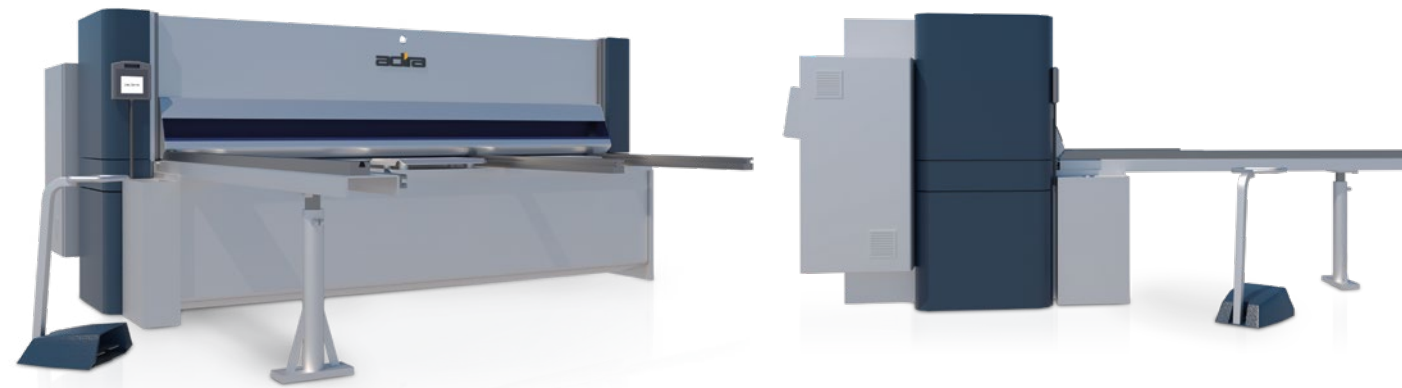


Regulation of the gap between blades, manual or automatic adjustment, variable according to the type and thickness of the material being cut.

Side arch allows for repeat cuts on sheets longer than the nominal length of the machine.

## TECHNICAL DATA SHEETS

| GH                                     |            | 00420    | 00630    | 00640    | 00660    | 01030    | 01040  | 01330  | 01340  | 01360  |
|--|------------|----------|----------|----------|----------|----------|--------|--------|--------|--------|
| <b>Cutting capacity (normal speed)</b> |            |          |          |          |          |          |        |        |        |        |
| Solid steel (45 daN/mm <sup>2</sup> )  | mm         | 4        | 6,5      | 6,5      | 6,5      | 10       | 10     | 13     | 13     | 13     |
| Solid steel (70 daN/mm <sup>2</sup> )  | mm         | 2,5      | 4        | 4        | 4        | 6,5      | 6,5    | 8      | 8      | 8      |
| Cutting length                         | mm         | 2050     | 3050     | 4050     | 6100     | 3050     | 4050   | 3050   | 4050   | 6120   |
| Side frame arch                        | mm         | 260      | 260      | 260      | 260      | 260      | 330    | 260    | 330    | 260    |
| Cutting angle                          | degrees    | 11/6     | 11/3     | 11/3     | 11/6     | 2        | 13/4   | 2      | 13/4   | 12/5   |
| Adjustment of gap between blades       | mm         | 0,05-0,6 | 0,05-1,1 | 0,05-1,1 | 0,05-1,2 | 0,05-1,6 | 0,05-2 | 0,05-2 | 0,05-2 | 0,05-2 |
| Electric motor power                   | kW         | 9        | 15       | 15       | 18       | 15       | 15     | 18     | 18     | 18     |
| Number of blocks                       | -          | 11       | 13       | 19       | 25       | 16       | 22     | 16     | 22     | 31     |
| Back gauge stroke                      | mm         | 1000     | 1000     | 1000     | 1000     | 1000     | 1000   | 1000   | 1000   | 1000   |
| Cutting frequency                      | stroke/min | 45       | 24       | 21       | 17       | 10       | 8      | 9      | 8      | 6      |
| <b>Dimensions (CE Machine)</b>         |            |          |          |          |          |          |        |        |        |        |
| Length                                 | mm         | 2950     | 3950     | 4980     | 7120     | 3980     | 5150   | 3980   | 5150   | 7100   |
| Width                                  | mm         | 2480     | 2480     | 2480     | 2580     | 2820     | 3100   | 2820   | 3100   | 3100   |
| Width for transport                    | mm         | 2180     | 2180     | 2180     | 2280     | 2280     | 2500   | 2280   | 2500   | 2450   |
| Height                                 | mm         | 1730     | 1730     | 1825     | 2150     | 2150     | 2150   | 2150   | 2150   | 2400   |
| Approximate Weight                     | Kg         | 5000     | 5900     | 8100     | 15000    | 10000    | 17500  | 10000  | 17500  | 31000  |



| Equipment          | GH   | GH PLUS  |
|--------------------|--|----------|
| <b>Models</b>      | GH0420   | ■        |
|                    | GH0630   | ■        |
|                    | GH1030   | ■        |
|                    | GH1330   | ■        |
|                    | GH0640   | ■        |
|                    | GH1040   | ■        |
|                    | GH1340   | ■        |
|                    | GH0460   | ■        |
|                    | GH0660   | ■        |
|                    | GH1360   | ■        |
| <b>Functions</b>   | Support Table for Thin Sheets (SCSC)                     | ■        |
|                    | Support Table for Thin Sheets with Pins                  | ■        |
| <b>Arms</b>        | Front Support Arm with Scale L=1100 mm                   | standard |
|                    | Additional Front Support Arm with Scale L=1100 mm        | ■        |
|                    | Two Front Support Arms without Scale L=1100 mm           | standard |
|                    | Front Support Arm without Scale L=1100 mm                | standard |
|                    | Additional Front Support Arm without Scale L=1100 mm     | ■        |
|                    | Front Support Arm with Scale and pedestal L=2050 mm      | ■        |
|                    | Front Support Arm without Scale, with pedestal L=2050 mm | ■        |
|                    | Front Support Arm with Scale and pedestal L=2050 mm      | ■        |
|                    | Pillow Bearings  | standard |
|                    | Support with 2 ball transfer units                       | ■        |
| <b>Back gauges</b> | Two squaring guides                                      | standard |
|                    | Long squaring guide L=1100 mm                            | ■        |
|                    | One front gauge  | ■        |
|                    | One retractable gauge                                    | standard |
| <b>Safety</b>      | Goniometer with auxiliary back gauge                     | ■        |
|                    | Front gauge (1 additional unit)                          | ■        |
|                    | Retractable back gauge (1 additional unit)               | ■        |
|                    | Rear protection via photoelectric cell                   | ■        |
|                    | Without CE safety  | ■        |
| <b>Controls</b>    | Block Guard with photoelectric cell                      | ■        |
|                    | Block Guard with tilting plate                           | ■        |
|                    | Adiramatic 4087 Control                                  | standard |
| <b>Other</b>       | Cybtouch 8 Control                                       | standard |
|                    | Hanging Controls (Cybtouch 8)                            | ■        |
|                    | Voltage 220 V; 60 Hz                                     | ■        |
|                    | Insulating Supports                                      | ■        |
|                    | Special Paint  | ■        |